

Affordable Burial & Cremation



Licensed By The Bereavement Authority Of Ontario
Class 1 Transfer Service
2020733 Ontario Ltd.

“Helping you make final arrangements as simple as....A B C”

Price List

Effective June 1st 2021

Matthew Stevens
Managing Funeral Director

1-205 Nebo Road
Hamilton Ontario L8W2E1
Phone: (905) 389-2998
Toll Free: 1 (888) 389-2998
www.affordableburialandcremation.ca
info@abcservice.ca

Methods of Payment

Accepted by Affordable Burial & Cremation are the following:
VISA, Mastercard, Debit, Cheque, Bank Draft, E-transfer, Cash & E-Pay.

Affordable Burial and Cremation (A.B.C.)

Is a proud member of

The Hamilton Chamber of Commerce

Business Network International

Guaranteed Funeral Deposits of Canada

Assurant Life Of Canada

The Better Business Bureau (BBB)

The Canadian Federation of Independent Business (CFIB)

The Canadian Businesses Charity Bureau (CBCB)

Proud Member of the Ontario Association For Cemetery and Funeral Professionals

**Standard Service Charge
Direct Cremation Package/Itemized Price**

Professional Services Co-ordination of Activities	\$450.00
Direction and implementation of arrangements by licensed Funeral Directors and support staff.	
Documentation	\$265.00
Prepare documents, permits, Including 12 Certified Funeral Director's Proof of Death Certificates A Certified Digital Copy may be requested at an additional charge. Notification to Income Securities. CPP Death Benefit Application & Spousal Death Benefit Application If Applicable. The filing and storage of records.	
Transportation from place of death (100 KM Radius)	\$450.00
Transportation by our staff into our care from place of death within a 100km radius (Additional Km Fee of \$1.95 per Km applies). Transportation to the crematorium and back into our care.	
Facilities for Holding/Shelter	\$250.00
The sheltering of the deceased in a secured area until final disposition can take place (Between 24-48 hours)	
Supplies	
Manchester Cremation Container up to 150lbs By Victoriaville & Co CR199-00007 Card Board Container Used for cremation only	\$195.00
Subtotal of Services & Supplies	\$1,610.00
	+ tax
Disbursements (3rd party fees, taxes included)	
City Hall Registration Burial Permit	\$48.00
Coroner's Cremation Certificate	\$75.00
Cremation Fee	\$553.70
Total of Disbursements	\$676.70
Grand Total w/taxes	\$2,496.00

Free Online Obituary

Identification service, and witness cremation services are available at an additional cost

48 hour Rush Cremation Fee & Oversized Limits may apply for some Crematoriums

Some Conditions Apply

ODSP & Special Supports Coverage May Be Available

**Standard Service Charge
Transfer Service With Cremation Fee Arranged Elsewhere**

Professional Services Co-ordination of Activities \$450.00

Direction and implementation of arrangements by licensed Funeral Directors and support staff.

Documentation \$265.00

Prepare documents, permits,
Including 12 Certified Funeral Director's Proof of Death Certificates
A Certified Digital Copy may be requested at an additional charge.
Notification to Income Securities, CPP Death Benefit Application & Spousal Death Benefit
Application If Applicable.
The filing and storage of records.

Transportation from place of death (100 KM Radius) \$450.00

Transportation by our staff into our care from place of death within a 100km radius
(Additional Km Fee of \$1.95 per Km applies).
Transportation to the crematorium and back into our care.

Facilities for Holding/Shelter \$250.00

The sheltering of the deceased in a secured and private area until final disposition can take place
(Between 24-48 hours)

Supplies

Manchester Cremation Container up to 150lbs \$195.00
By Victoriaville & Co CR199-00007
Card Board Container
Used for cremation only

Subtotal of Services & Supplies \$1,610.00

+ tax

Disbursements(3rd party fees, taxes included)

City Hall Registration Burial Permit \$48.00
Coroner's Cremation Certificate \$75.00

Total of Disbursements \$123.00

Grand Total w/taxes **\$1,942.30**

Free Online Obituary

Identification service, and witness cremation services are available at an additional cost

48 hour Rush Cremation Fee & Oversized Limits may apply for some crematoriums
Some Conditions Apply

ODSP & Special Supports Coverage May Be Available

**Standard Service Charge
Alkaline Hydrolysis Package/Itemized Price**

Professional Services Co-ordination of Activities	\$450.00
Direction and implementation of arrangement by licensed Funeral Directors and support staff.	
Documentation	\$265.00
Prepare documents, permits, Including 12 Certified Funeral Director's Proof of Death Certificates A Certified Digital Copy may be requested at an additional charge. Notification to Income Securities. CPP Death Benefit Application & Spousal Death Benefit Application If Applicable. The filing and storage of records.	
Transportation from place of death (100 KM Radius)	\$450.00
Transportation by our staff into our care from place of death within a 100km radius (Additional Km Fee of \$1.95 per Km applies). Note: Please allow 24-48 hours for paperwork to be registered Transportation from the crematorium back into our care.	
Facilities for Holding/Shelter	\$250.00
The sheltering of the deceased in a secured and private area until final disposition can take place (Up to 24-48 Hours)	
Other Service or Supplies	
Additional Km Fee to Newcastle Funeral Home at 1.95 per KM	\$310.05
Subtotal of Services & Supplies	\$1,725.05
	+ tax
Disbursements(3rd party fees, taxes included)	
City Hall Registration Burial Permit	\$48.00
Coroner's Cremation Certificate	\$75.00
Cremation Fee	\$706.25
Total of Disbursements	\$829.25
Grand Total w/taxes	\$2,778.56

Free Online Obituary

Identification service, and witness cremation services are available at an additional cost

48 hour Rush Cremation Fee & Oversized Limits may apply for some crematoriums

ODSP & Special Supports Coverage May Be Available

Standard Service Charge

Direct Cremation Package with Church Service

Professional Services Co-ordination of Activities	\$450.00
Direction and implementation of arrangements by licensed Funeral Directors and support staff.	
Documentation	\$265.00
Prepare documents, permits, Including 12 Certified Funeral Director's Proof of Death Certificates A Certified Digital Copy may be requested at an additional charge. Notification to Income Securities. CPP Death Benefit Application & Spousal Death Benefit Application If Applicable. The filing and storage of records.	
Transportation from place of death (100 KM Radius)	\$450.00
Transportation by our staff into our care from place of death within a 100km radius (Additional Km Fee of \$1.95 per Km applies)	
Facilities for Holding/Shelter	\$250.00
The sheltering of the deceased in a secured and private area until final disposition can take place (Up to 48 Hours)	
Professional Service Vehicle	\$425.00
Use of Funeral Coach Or Additional Funeral Service Vehicle	
Church Service Set Up	\$450.00
ABC staff will set up the Casket / Container at the church 30 minutes prior to the start of any family led service depart once service has commenced. We will then wait for permission from the Church Staff to bring your loved one to the Crematorium	
Extra Church Set Up Staffing Fee	\$300.00
Pallbearers	\$400.00
Supplies	
WINSTON By Victoriaville	\$1095.00
WINSTON PC DR220-00044	
Subtotal of Services & Supplies	\$3,635.00
	+ tax

* Please note we have over 45 Caskets to choose from.*

Disbursements(3rd party fees, taxes included)

City Hall Registration Burial Permit	\$48.00
Coroner's Cremation Certificate	\$75.00
Cremation Fee	\$553.70
Total of Disbursements	\$676.70

Grand Total w/taxes **\$4,784.25**

Free Online Obituary

Identification service, and witness cremation services are available at an additional cost

48 hour Rush Cremation Fee & Oversized Limits may apply for some crematoriums

ODSP & Special Supports Coverage May Be Available

**Standard Service Charge
Direct Burial Package**

Professional Services Co-ordination of Activities	\$450.00
Direction and implementation of arrangements by licensed Funeral Directors and support staff.	
Documentation	\$265.00
Prepare documents, permits, Including 12 Certified Funeral Director's Proof of Death Certificates A Certified Digital Copy may be requested at an additional charge. Notification to Income Securities. CPP Death Benefit Application & Spousal Death Benefit Application If Applicable. The filing and storage of records.	
Transportation from place of death (100 KM Radius)	\$450.00
Transportation by our staff into our care from place of death within a 100km radius (Additional Km Fee of \$1.95 per Km applies) *Note: Please allow 24 to 48 Hours for the paperwork to be registered.*	
Facilities for Holding/Shelter	\$250.00
The sheltering of the deceased in a secured and private area until final disposition can take place (Up to 48 hours)	
Professional Service Vehicle	\$425.00
Use of Funeral Coach Or Additional Funeral Service Vehicle	
Grave Set Up Staff Fee	\$400.00
ABC staff will set up the Casket / Container at the church 30 minutes prior to the start of any family led service and depart once service has commenced. ABC Staff are not permitted to officiate a service.	
Pallbearers	\$400.00
Supplies	
WINSTON By Victoriaville	\$1095.00
WINSTON PC DR220-00044	
* Please note we have over 45 Caskets to choose from.*	
Subtotal of Services & Supplies	\$ 3,735.00
	+ tax
<u>Disbursements(3rd party fees, taxes included)</u>	
City Hall Registration Burial Permit	\$48.00
Grand Total w/taxes	\$4,268.55

**Standard Service Charge
Direct Burial Package with Church Service**

Professional Services Co-ordination of Activities **\$450.00**
 Direction and implementation of arrangements by licensed Funeral Directors and support staff.

Documentation

Prepare documents, permits, **\$265.00**
 Including 12 Certified Funeral Director's Proof of Death Certificates
 A Certified Digital Copy may be requested at an additional charge.
 Notification to Income Securities.
 CPP Death Benefit Application & Spousal Death Benefit Application If Applicable.
 The filing and storage of records.

Transportation from place of death (100 KM Radius) **\$450.00**

Transportation by our staff into our care from place of death within a 100km radius
 (Additional Km Fee of \$1.95 per Km applies)

Facilities for Holding/Shelter **\$250.00**

The sheltering of the deceased in a secured and private area until final disposition can take place
 (Up to 48 hours)

Professional Service Vehicle **\$425.00**
 Use of Funeral Coach or Additional Funeral Service Vehicle

Church Service Set Up Staff Fee **\$300.00**

ABC staff will set up the Casket / Container at the church 30 minutes prior to the start of any family led service and depart once service has commenced.

ABC Staff are not permitted to officiate a service.

Pallbearers **\$400.00**

Grave Set Up

ABC staff will set up the Casket / Container at the church 30 minutes prior to the start of any family led service and depart once service has commenced. **\$400.00**
 ABC Staff are not permitted to officiate a service.

The cemetery staff will ensure the deceased is buried upon ABC staff departing.

WINSTON By Victoriaville
 WINSTON PC DR220-00044



\$1,095.00

* Please note we have over 45 Caskets to choose from.*

Services & Supplies **\$4,035.00**

Disbursements (3rd party fees, taxes included) **+taxes**
 City Hall Registration Burial Permit **\$48.00**

\$4,607.55

Disbursements are 3rd party fees (taxes included).

These services are paid by ABC on behalf of the family or estate of the deceased.

These disbursements include:

City Hall Registration Burial Permit	\$48.00
Coroner's Cremation Certificate (with cremation only)	\$75.00
Cremation Fee (To Bayview Crematorium)	\$553.70
Total of Disbursements	\$676.70

Traditional Single Urn Selections + Taxes

Sentinal Brass with Pewter Colour Finish Urn
 Gravure Craft #UR-1403C
 (Available in Brass, Copper or Pewter)



\$179.00

The Andover
 (Ebony, or Mocha Finish)
 Dodge Urn Co. 956901 & 956900



\$229.00

The Eclat Collection
 (Blue, Green & Burgandy Available)
 Gravure Craft



\$295.00

PhotoRoom®

Sunset Golfer
 Perfect Memorial PM11500



\$345.00

Caribbean Dream Infinite Impressions
 PerfectMemorial PM13294



\$345.00

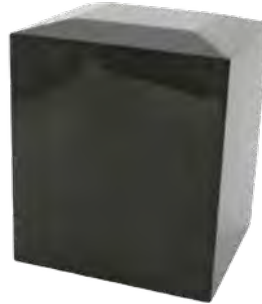
Over 300 Urns In Store

Traditional Companion Urns + Taxes

Amber Companion Urn
Butterworth Urn Co
SKU: 860
\$550.00



Platinum Companion Urn
Butterworth Urn Co
SKU: 860
\$550.00



Red Heart Companion Urn
Butterworth Urn Co SKU:
1206
\$950.00



White Heart Companion Urn
Butterworth Urn Co
SKU: 1106
\$950.00



3D Lakeside Companion Urn
Gravure Craft
Item #Oak (UR-6007) / Walnut (UR-6008)
\$980.00



Eco Friendly & Bio-degradable Urns + Taxes

Scattering Tubes Available
Gravure Craft



\$155.00

Journey Earth Urn Aqua Blue
Butterworth Urn Co 1410



\$289.00

The Aqua Shell
Eckels ECKAS225



\$395.00

The Oceane Aqua
Dodge Urn Co. 950250



\$398.00

Himalayan Rock Salt Urn
Butterworth Urn Co 7030



\$425.00

Bio Tree Urn
The Living Urn Co.
Comes With Tree



\$299.00

Bio Tree Urn
The Living Urn Co.
Comes With Tree



\$249.00

Cremation Container Selections +Taxes

Manchester Cremation Container up to 150lbs
 By Victoriaville & Co CR199-00007
 Card Board Container
 Used for cremation only



\$195.00

Cremation Tray By Manchester Co.

Cremation Container
 (Entry Level Option/cardboard top/chipboard base)
 Suitable for up from 150 –299 lbs
 CR199-00007

PhotoRoom™



\$250.00

Oversized Cremation Containers & Caskets Available

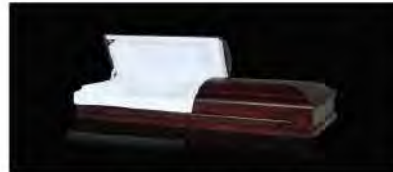
\$350.00 & Up

WINSTON By Victoriaville
 WINSTON PC DR220-00044



\$1,095.00

“The Norway” Traditional Casket#526
 Northern Casket Company
 Poplar veneer sides, solid poplar top and moldings,with a
 Rosetan crepe interior



\$1,795.00

NORWAY (WALNUT)
 Available in:
 Price: \$1,395

“The Minto”Traditional Casket#632
 Northern Casket Company
 Poplar veneer sides, solid poplar top and moldings



\$1,995.00

MINTO
 Available in:
 Price: \$1,795

with a Rosetan crepe interior

Additional Caskets are available upon request.

Gravure Craft Cremation Jewellery - Pendants

Pendants

 Cross Stainless Steel Silver/Gold Finish URJ-1000*	 Heart Stainless Steel Silver Finish URJ-1010*	 Tear Drop Stainless Steel Silver Finish URJ-1020	 Pet Stainless Steel Silver Finish URJ-1030*	 Cat Stainless Steel Silver Finish URJ-1180*	 Butterfly Stainless Steel Silver Finish URJ-1190	 Angel Stainless Steel Silver Finish URJ-1200*	 Bullet Stainless Steel Silver Finish URJ-1210*	 Jeweled Heart Stainless Steel Silver Finish URJ-1340*	 Heart Stainless Steel Gold Finish URJ-1350*	 Pet Stainless Steel Silver Finish URJ-1360*	 Jeweled Dragonfly Stainless Steel Gold Finish URJ-1370	 Music Note Stainless Steel Silver Finish URJ-1500*	 Motorcycle Stainless Steel Silver Finish URJ-1510*	 Anchor Stainless Steel Silver Finish URJ-1520	 Butterfly Stainless Steel Silver Finish URJ-1530*
 Cross Stainless Steel Silver Finish URJ-1040*	 Heart Stainless Steel Silver Finish URJ-1050*	 Cylinder Stainless Steel Silver Finish URJ-1060*	 Circular Pendant Stainless Steel Silver Finish URJ-1080*	 Bird Stainless Steel Silver Finish URJ-1220*	 Maple Leaf Stainless Steel Silver Finish URJ-1230*	 Music Key Stainless Steel Silver Finish URJ-1240*	 Dolphin Stainless Steel Silver Finish URJ-1250*	 Boot Stainless Steel Silver Finish URJ-1380*	 Bird in Flight Stainless Steel Silver Finish URJ-1390	 Angel Stainless Steel Silver & Gold Finish URJ-1400	 Fish Stainless Steel Silver Finish URJ-1410*	 Heart Stainless Steel Silver Finish URJ-1540*	 Flower Stainless Steel Silver Finish URJ-1550*	 Ribbon Stainless Steel Silver Finish URJ-1560*	
 Two-Toned Tear Drop Stainless Steel Silver Finish URJ-1090	 Heart Stainless Steel Silver Finish URJ-1110*	 Cylinder Stainless Steel Silver Finish URJ-1120	 Footprints/Heart Stainless Steel Silver Finish URJ-1130*	 Cylinder Stainless Steel Silver Finish URJ-1260	 Jeweled Bullet Stainless Steel Silver Finish URJ-1270	 Horn Stainless Steel Silver Finish URJ-1280	 Cross Stainless Steel Silver Finish URJ-1290	 Dragonfly Stainless Steel Silver Finish URJ-1420	 Dove Stainless Steel Silver Finish URJ-1430*	 Double Dolphin Stainless Steel Silver Finish URJ-1440	 Circular Stainless Steel Silver Finish URJ-1450*	 Tear Drop Stainless Steel Silver Finish URJ-1570*	 Double Heart Stainless Steel Silver Finish URJ-1580	 Tear Drop Stainless Steel Silver Finish URJ-1590*	
 Key to my Heart Stainless Steel Silver Finish URJ-1140*	 Bone Stainless Steel Silver Finish URJ-1150*	 Ring Locket** Stainless Steel Silver Finish URJ-1160	 Teddy Bear Stainless Steel Silver Finish URJ-1170*	 Jeweled Pendant Stainless Steel Silver Finish URJ-1300*	 Heart with Wings Stainless Steel Silver Finish URJ-1310*	 Butterfly with Heart Stainless Steel Silver Finish URJ-1320	 Green Jeweled Cross Stainless Steel Silver Finish URJ-1330*	 Rectangular with Heart Stainless Steel Silver Finish URJ-1460*	 Rectangular Stainless Steel Silver Finish URJ-1470*	 Hook Stainless Steel Silver Finish URJ-1480	 Guardian Angel Stainless Steel Silver Finish URJ-1490*	 Infinity Stainless Steel Silver Finish URJ-1600	 Double Ring Stainless Steel Silver Finish URJ-1610	 Classic Angel Stainless Steel Silver Finish URJ-1620	

Note: All pendants include a 21" stainless steel snake chain except URJ-1090. All Jewellery is made of 316 jewellery quality stainless steel.

*Pieces with this symbol can be engraved on the back side

**Pieces with this symbol do not hold cremated remains

All Jewellery is made of 316 jewellery quality stainless steel.

*Pieces with this symbol can be engraved on the back side

Additional Services + Taxes

Scattering of Cremated Remains	\$295.00
Delivery of Cremated Remains	
Residence - (located within the City of Hamilton/Aldershot)	\$250.00
Cemetery - (located within the City of Hamilton/Aldershot)	\$250.00
Canada Post – (A.B.C. Administration Fee / S&H additional)	\$95.00
Possession of Cremated Remains & Refundable Deposit	\$350.00
Additional Documentation	
Additional proof of death certificates	\$15.00/each
Certified Digital Copy Of Proof Of Death Certificate	\$125.00/each
Letter of Attendance	\$20.00/each
Aftercare- additional meeting with staff to discuss estate documentation.	\$495.00
<u>Ashes Urn Placement</u>	
At A.B.C. we will gladly fill an urn, keepsake urn or cremation jewelry purchased elsewhere.	
There is a nominal fee attached to this service for the time our Funeral Directors dedicate to this process.	
Keepsake Urn	\$50.00/each
Full Size Urn	\$80.00/each
Cremation Jewelry	\$35.00/each
<u>Identification Services</u>	
Preparation of Deceased	\$300.00
Supply linens, gloves to cover the deceased in a shroud or in clothing supplied by the family; As well as minimum preparation for final identification.	
Staff Fee	\$225.00
I.D Room Fee	\$250.00
Facilities For Storage & Shelter Extra Days	\$50.00
Witness Cremation Staff Fee	\$250.00
Burial Staff Fee	\$250.00

Estate Aftercare



FinalDocx is only \$495.00+hst

FinalDocx® products are made available through Affordable Burial & Cremation.

FinalDocx® is as simple as A.B. C

Our staff will use the application to collect all pertinent data such as vital statistics (name, address, phone number etc.). They will also take that big mountain of information about your loved one and input it into the system. Finally, they will verify the information is accurate and file the case with the authorities. The system will then send you a detailed report. Simple.

<ol style="list-style-type: none"> 1. Notification to Old Age Security Program 2. Notification to Service Canada 3. Canada Revenue Agency 4. HST/GST recalculation 5. Canada Pension Plan Death Benefit 6. Canada Pension Plan Survivor's Benefit 	<ol style="list-style-type: none"> 7. Equifax (Credit Reporting Agency) 8. Trans Union (Credit Reporting Agency) 9. Cancellation of Provincial Health Card 10. Cancellation of Provincial Driver's License 11. Cancellation of Provincial Photo I.D. card 	<ol style="list-style-type: none"> 12. Notification to Social Insurance Program 13. Transfer rewards cards 14. Provincial Outdoors Card 15. Blue Cross 16. Cancel or transfer utilities <ul style="list-style-type: none"> o Hydro o Telephone o Cable o Gas 	<ol style="list-style-type: none"> 17. Cancel Mobile Phone 18. Cancel Credit Cards <ul style="list-style-type: none"> o Visa o Mastercard o Amex o Credit Union o Retail Cards 19. U.S. Social Security Administration 20. Nexus Travel Care <p><i>And many more items ...</i></p>
---	--	--	---

Our data collection and vendor relations teams work tirelessly around the clock to keep adding into the system. Making available to you new processes and changing/updating contacts and processes so that you don't have to.

